



MONORAIL

Monorail – option of the Ultraglide system. At least one fixed component (glazing) in the structure is the characteristic feature of the system. A system featuring improved thermal performance, used to design sliding and lift-sliding structures.

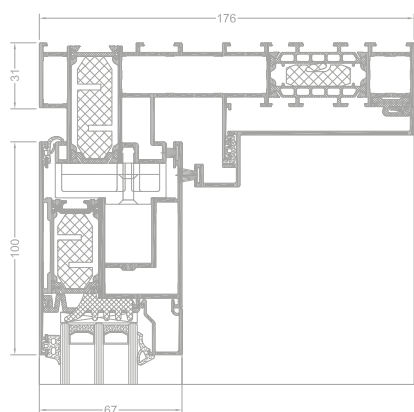
A selection of painting options, between RAL palette (Qualicoat 1518), wood patterns Aliplast Wood Colour Effect (Qualideco PL-0001), anodized finish, also in bi-colour

The possibility of using double or triple glazing

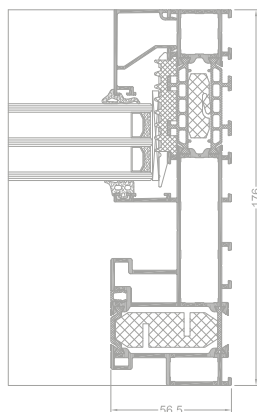
Thermal insulation under the glass which improves the thermal insulation of the section

Thermal insulation which improves the thermal insulation of the section

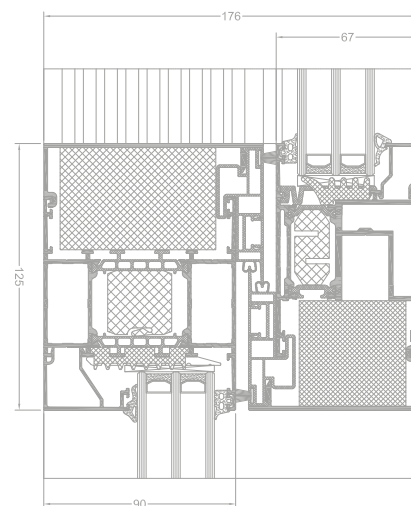
MONORAIL



MONORAIL cross section



MONORAIL cross section



MONORAIL cross section

MONORAIL

MONORAIL

Monorail – option of the Ultraglidle system. At least one fixed component (glazing) in the structure is the characteristic feature of the system. A special structure of the frame makes it possible to increase the clear opening relative to the fixed component. The system features improved thermal performance.

- maximum leaf weight : 400 kg
- single-rail frame
- possible structure variants:
 - 2-component (sash + fix)
 - 3-component (sash + fix + sash)
 - 4-component (2 sashes + 2 fixes)
- optional to use glazing from the outside, which makes it possible to use large-size, heavy infills.

| A wide range of colours available - RAL palette, structural colours, Aliplast Wood Colour Effect, bi-colour.

TECHNICAL SPECIFICATION

SYSTEM	MATERIAL	DEPTH OF FRAME	DEPTH OF LEAF	GLAZING RANGE	WEIGHT OF LEAF	DOOR TYPES
MONORAIL	aluminium / polyamid	176 mm /	67 mm /	14-49 mm fix 12-72 mm	to 400 kg	sliding, lift-sliding

PERFORMANCE

SYSTEM	THERMAL INSULATION Uf *	AIR PERMEABILITY	WINDLOAD RESISTANCE	WATERTIGHTNESS
MONORAIL	Uf from 0,93 W/m ² K	Class 4; EN 12207	C3 (1200Pa); EN 12210	7A (300 Pa); EN 12208

* Thermal insulation is dependent on a combination of profiles and thickness of the filling.